

EEE 01
TRACKING INDEX TEST APPARATUS
IEC 60112



SECOM

EEE 01

TRACKING INDEX TEST APPARATUS

IEC 60112



The **Tracking Index Test Apparatus** from SECOM is designed to determine the Comparative tracking Index (CTI).

The **Tracking Index Test Apparatus** from SECOM is totally controlled by PC (Embedded PC) with drop indication, voltage indication, current indication and timer indication on a 19" digital display LCD.

IEC 60112.

Method for determining the comparative and the proof tracking index of solid insulating materials under moist conditions.

This method simulates tracking currents on insulation material by providing drops between electrodes. During normal use insulating material may be exposed to moisture and dirt that, if conductive, may cause stress and fire hazard.

The sample to be tested is subjected to a voltage between **0 to 600 Vac** by means of two electrodes resting on it with a load of 1 Newton. Between electrodes, drops of conductive solution are dropped at regular intervals.

SECOM reserves the right to change the specifications or design without prior notice.



Steps to make a test:

- Place the sample under test on the table.
- Set the following parameters:
 - Voltage Test.
 - MAX Current.
 - Current limit fails.
 - Amount of drops.
 - Time between drops.
 - Maximum length of the fault current.
 - Number of report.
 - Name of the client.
- Do click on the "Test" button.
- The system will perform the following steps:
 - Actuate the relay that shorting the electrodes to measure current.
 - Increase the voltage between electrodes, until the voltage setting.
 - Increase the current until you reach the maximum current setting on this screen.
 - Power off of the relay short circuit.
 - Begin to drop drops at regular intervals.
 - Measure current and voltage at each drop.
 - After the drop falls, the current system measures every 0.5 sec to see if it was cutting current (set to advance) and refresh the main screen with the values of voltage between electrodes and current.
 - At the end of the test you will see a screen that will tell you how the test ended:
 - Because all the drops fell setuid for you and there was no current exceeding the current limit (Test OK).
 - Because the test was canceled by You (Test CANCELLED).
 - Because the system recorded a current exceeding the current limit (Test with FAILURE).
- If it is necessary to stop the test for any reason, press the Esc key (Escape), which will cancel all operations in progress and left the equipment in the initial conditions.

Calle 2106 N° 7411 (Camino Viejo a Soldini al 3790)
phone. +54 9 341 3080258 | info@secomtesters.com
www.secomtesters.com

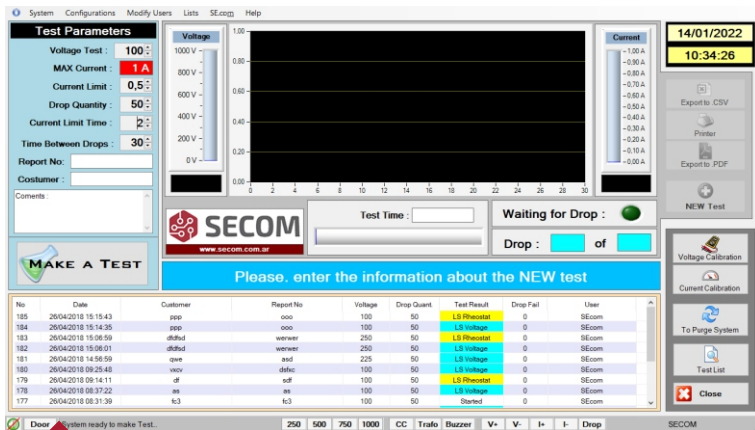
EEE 01

TRACKING INDEX TEST APPARATUS

IEC 60112

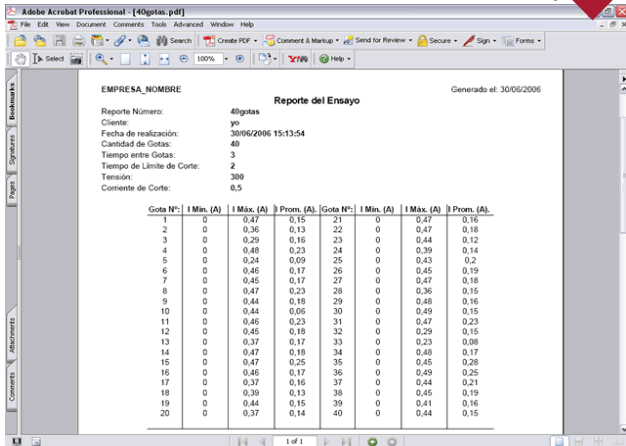
Software specifications

- Easy to use.
- Save all tests.
- Make test list.
- Multi languages:
 - Spanish.
 - English.
 - Francais.
 - Portugues.
- Export to CSV files (ASCII format).
- Export to PDF files (to send by email or print).
- Screen to Calibration.
- Restricted access with user and password.
- Connection: USB port.
- Operating System: Windows 10 Home OS.



Main Screen

PDF Report



SECOM reserves the right to change the specifications or design without prior notice.



Keyboard & mouse wireless



Technical characteristics.

- Programmable Test voltage 0 to 600 Vca.
- Programmable voltage current tracking system to ensure 1 A short circuit current at all voltages from 0 to 600 Vac.
- Programmable current sensor with tripping circuit (0,5 A).
- Programmable drop interval from 0 to 60 sec.
- Built-in pumping device.
- Drop indication, voltage indication, current indication and timer indication on a 19" digital display LED.
- Drop counter by optical sensor.
- Totally controlled by PC (Embedded PC).
- Programmable temporized of the test sequence.
- 2 Platinum electrodes.
- Pre calibrated load on the electrodes, exerting a force of 1 Newton each.
- Reference IEC 60112.
- Power Supply: 220 Vac 50-60Hz (115 Vac Optional).
- Fuse rating 3 A rapid 20 x 5 mm.
- Dimensions:
 - Height: 600 mm
 - Width: 500 mm
 - Depth: 700 mm approx.
- Clear acrylic cover for safety.
- Adjustable sample platform.
- Weight: 67 Kg (with LCD).

Calle 2106 N° 7411 (Camino Viejo a Soldini al 3790)
phone. +54 9 341 3080258 | info@secomtesters.com
www.secomtesters.com